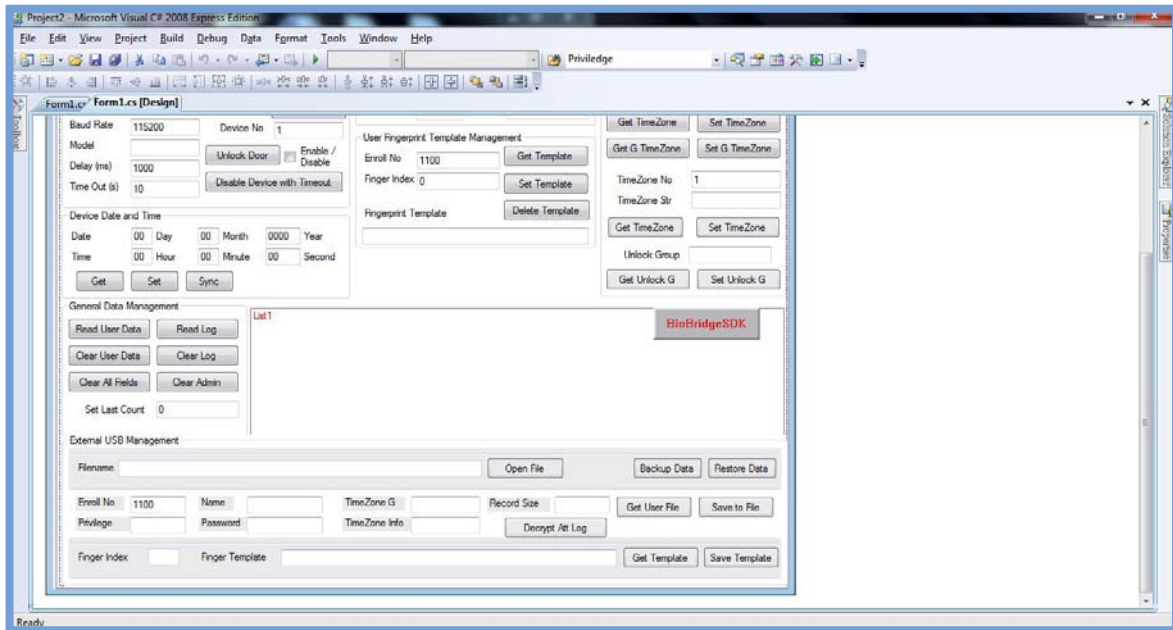
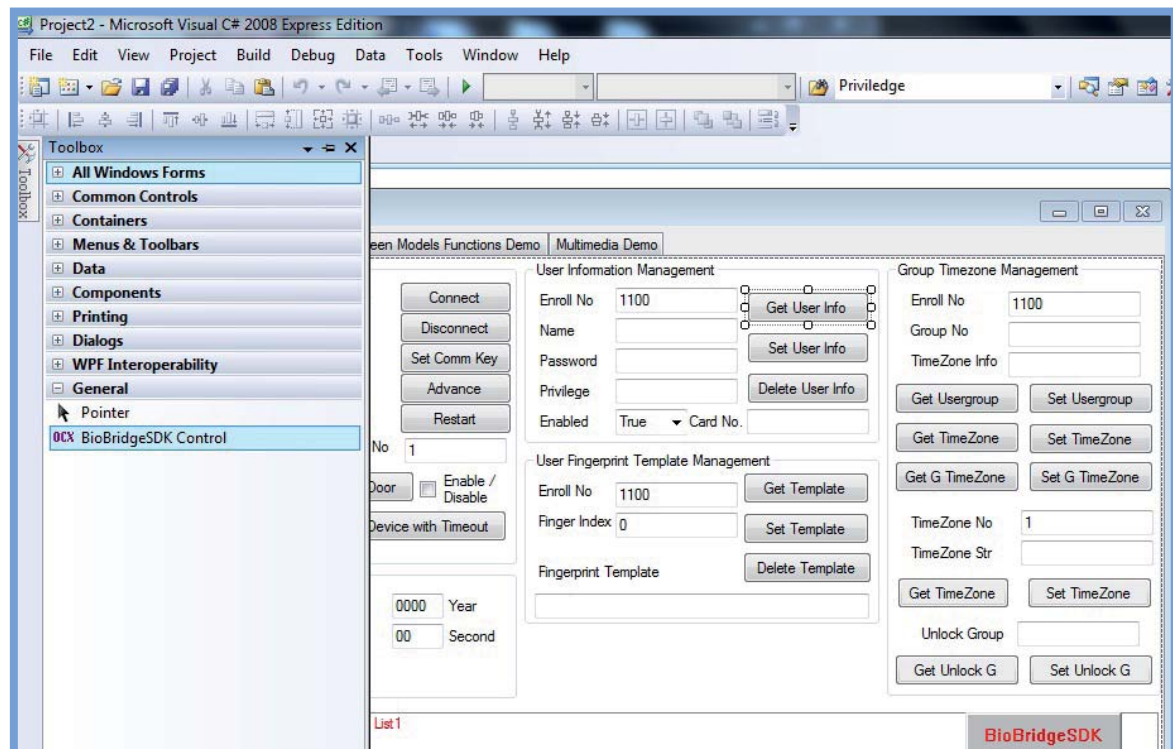


Connecting More Than 2 Fingerprint Terminals (Create Instance)

In some instances, you may need to have more than one BioBridgeSDK component present. To illustrate further, view the example below. List1 contains one BioBridgeSDK component. To detect a second fingerprint terminal you'll need to add one more BioBridgeSDK component.



To add another BioBridgeSDK component, go to **Toolbox -> General ->** and drag the **BioBridgeSDK Control** into the design view panel.



You can then change the name of the second BioBridge component in the Properties window, and use this updated name when doing further coding. For example, if you rename it as **BioBridgeSDK2**, your function name should be typed as named as **"BioBridgeSDK2.GetUserInfo"**

