

TECHNICAL TIPS

FRIS 2 DATABASE SERVER WITH MULTIPLE COPIES OF TCMS V2

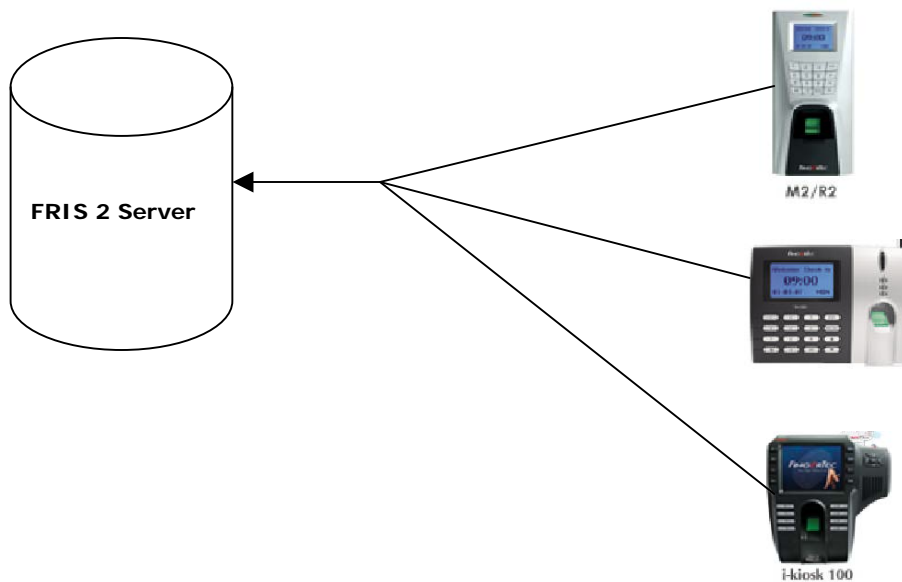
In a scenario where there multiple terminals installed in multiple departments, it good to have a database to centralized user information and transaction logs.

Previously head of department can only login to TCMS v2 by using department password to view and print reports for those assigned under the same department. Anyway head of department does not allow changing the clocking rules when needed. The right is with the HR (or the person on charge of TCMS v2). Furthermore changing clocking rules might affect other users too.

Therefore it is good if there are a centralized database server to store all transaction logs. Head of department will runs TCMS v2 and connect to this centralized database server to gather transaction logs. Now the head of department can define clocking rules, edit attendance data and print reports directly from the software.

Now we will use FRIS 2 server as centralized database server. You can use FRIS 2 as a centralized database server to

- 1 – transfer users among terminals
- 2 – to download users' transaction logs and store in a same server.



TECHNICAL TIPS

FRIS 2 DATABASE SERVER WITH MULTIPLE COPIES OF TCMS V2

In FRIS 2 Server, please make sure users are assigned into different department. You may need to confirm all user information (name, employee number etc) are fill-in correctly.

The screenshot shows the 'Departments Management' window. It includes a toolbar with icons for Add, Edit, Delete, Save, Cancel, User, and Exit. The main area is divided into two sections: a summary on the left and a data table on the right.

Summary:

- Department: Admin
- Zone:
- Mod. Date: 2008-11-7 9:24:37
- Total Users: 13
- Total Departments: 3

Departments Table:

Department	Zone	Date	Total Users
Admin		2008-11-7 9:24:37	13
Engineering		2008-11-7 9:24:31	3
IT		2008-11-7 9:24:41	8

Users Table:

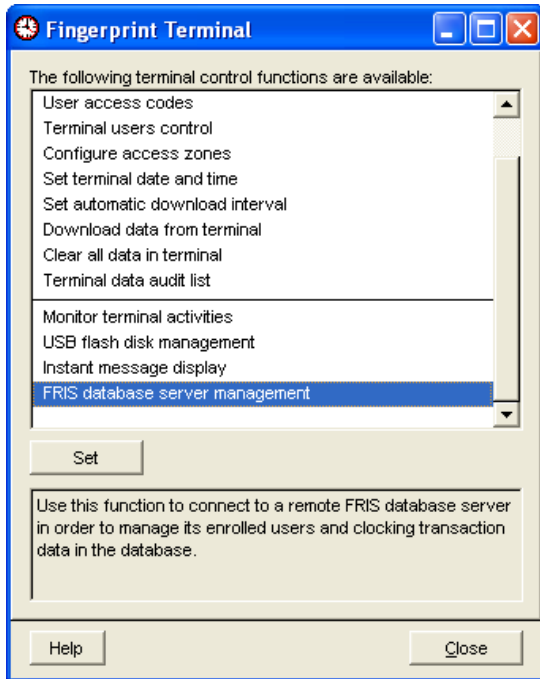
User ID	User Name	Name	Emp No	Section	Issued	Valid	Enrolled Templates
00001			00001		2008-10-30 13:42:1	Y	0
00004			00004		2008-10-30 13:42:1	Y	0
00520			00520		2008-10-30 13:42:1	Y	0
01002	Liza		01002		2008-10-30 13:42:1	Y	0
01003	Hon Seng		01003		2008-10-30 13:42:1	Y	0
01006	ChuYeong		01006		2008-10-30 13:42:1	Y	0
01063	Ana		01063		2008-10-30 13:42:1	Y	0
01084	Ricky		01084		2008-10-30 13:42:2	Y	0
01089	Kah Heng		01089		2008-10-30 13:42:2	Y	0
01092	Wei Sim		01092		2008-10-30 13:42:2	Y	0
01096	GinYi		01096		2008-10-30 13:42:2	Y	0
01101	Catherin		01101		2008-10-30 13:42:2	Y	0
01110	Jacky		01110		2008-10-30 13:42:2	Y	0

TECHNICAL TIPS

FRIS 2 DATABASE SERVER WITH MULTIPLE COPIES OF TCMS V2

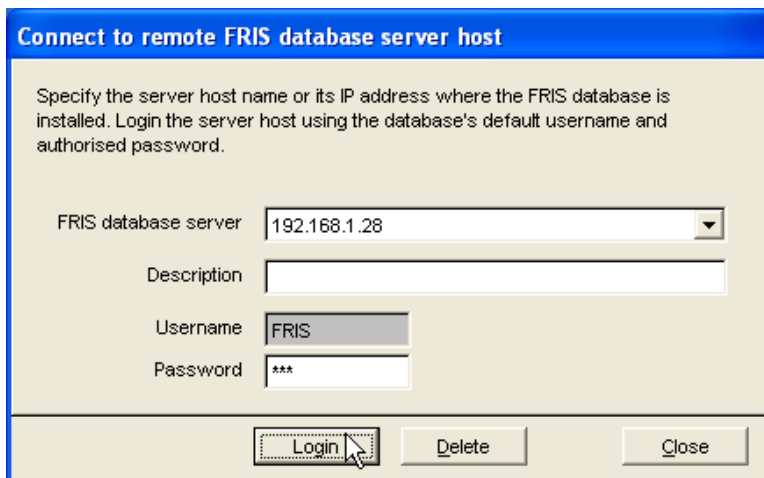
The transaction logs store in FRIS 2 database is ready to use by TCMS v2. Head of department will run the TCMS v2 and pull transaction logs from FRIS 2 server. You can refer to steps below,

Step 1



Click to open option "FRIS database server management"

Step 2



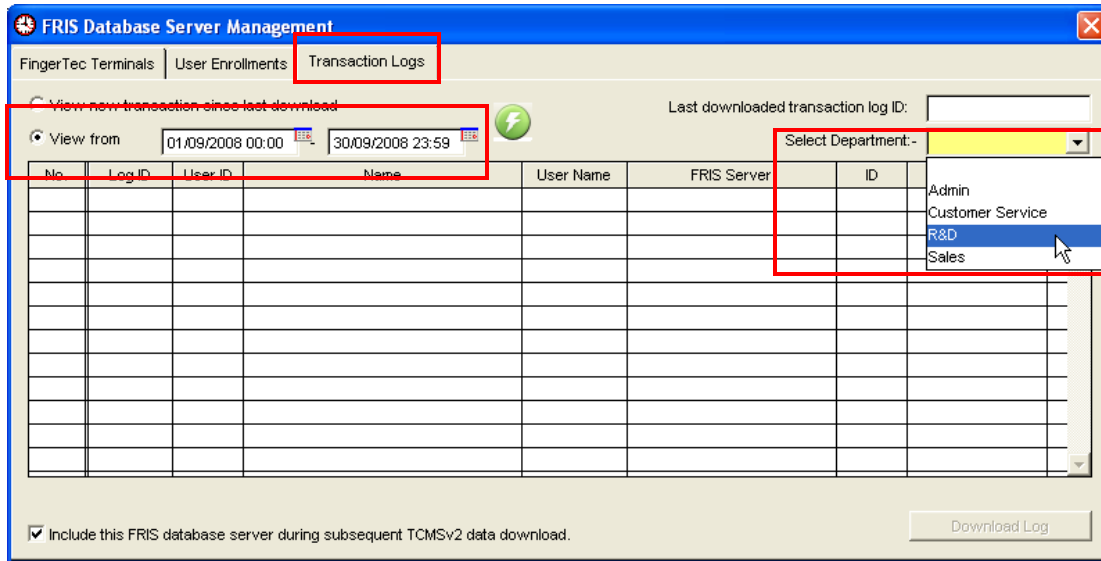
Enter the IP address of the FRIS 2 server, username and password.

Press Login to access.

TECHNICAL TIPS

FRIS 2 DATABASE SERVER WITH MULTIPLE COPIES OF TCMS V2

Step 3



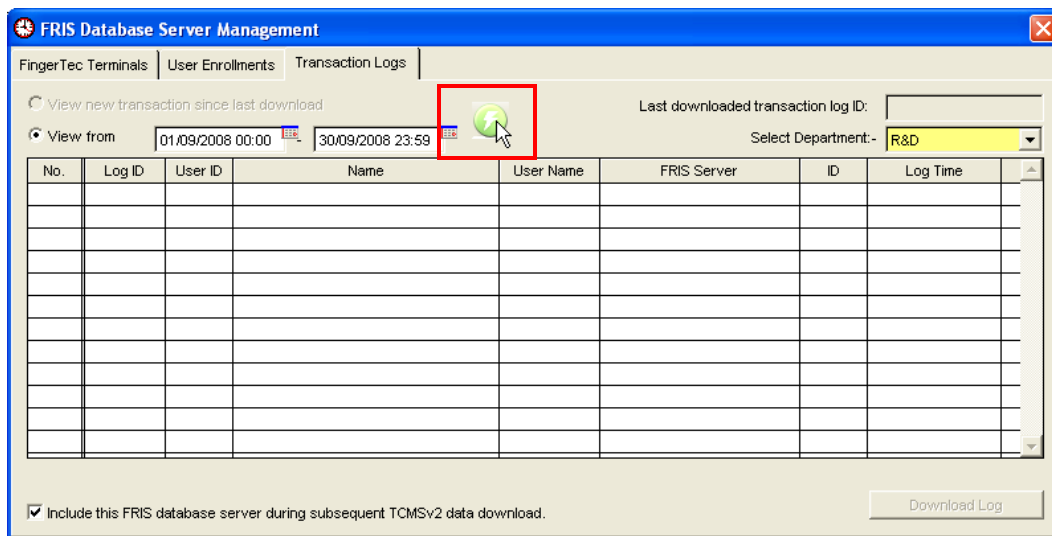
Click "Transaction logs" to go the page.

Click to select Department, example R&D.

Define the date range of transaction logs.

You can choose "view new transaction since last download" if you cannot remember the last download date.

Step 4

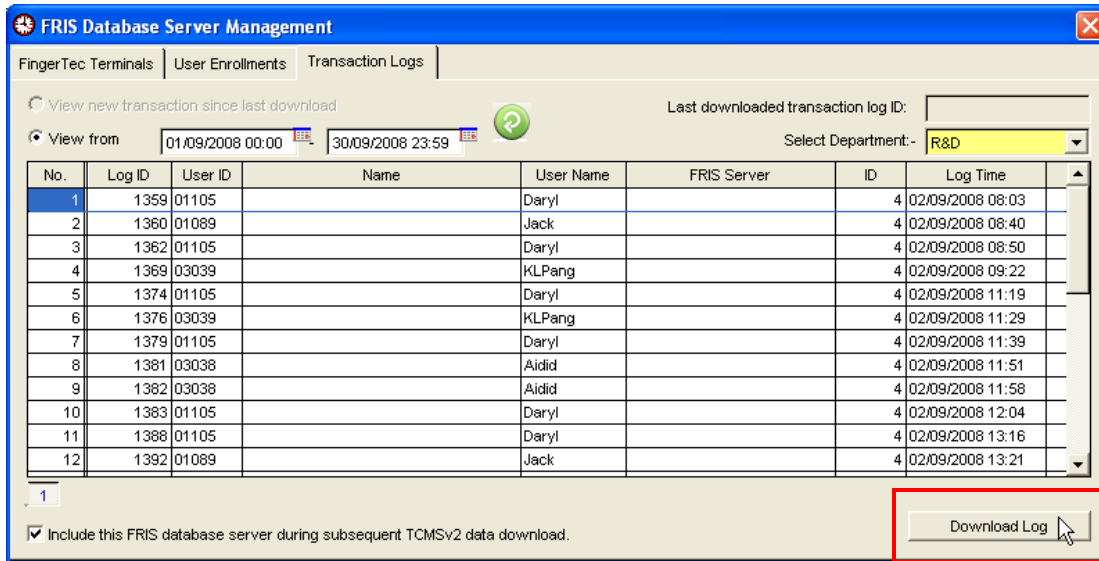


Click to start to search into FRIS 2 server.

TECHNICAL TIPS

FRIS 2 DATABASE SERVER WITH MULTIPLE COPIES OF TCMS V2

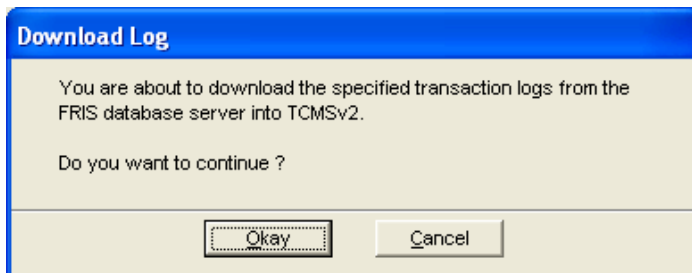
Step 5



All transaction logs are display on screen.

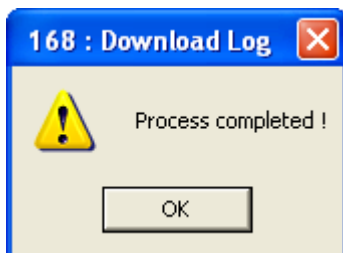
Click "Download Log" to save into TCMS v2.

Step 6



Click "Okay" to confirm to start the download process.

Step 7



Click OK to complete the process.

TECHNICAL TIPS

FRIS 2 DATABASE SERVER WITH MULTIPLE COPIES OF TCMS V2

Step 8

Below is the list of clocking data downloaded from clock terminal. Clocking record without 'I/O Slot' indicates current clocking fails to register clocking slot in the attendance sheet due to improper schedule.

ID	Description	User ID	Name	Clocking	Transaction	Date	I/O Slot
04		001105		03/09/2008 14:38	00	///	
04		003039		03/09/2008 16:42	00	///	
04		003039		03/09/2008 17:43	00	///	
04		001105		04/09/2008 08:02	00	///	
04		001089		04/09/2008 08:31	00	///	
04		003039		04/09/2008 09:10	00	///	

Enter your selection criteria for selective transaction viewing: -

ID: User ID: From: To: Transaction: Total: 962

Buttons: Help, Online, Convert, Export, Purge, Close

Check into Terminal Data Audit List.

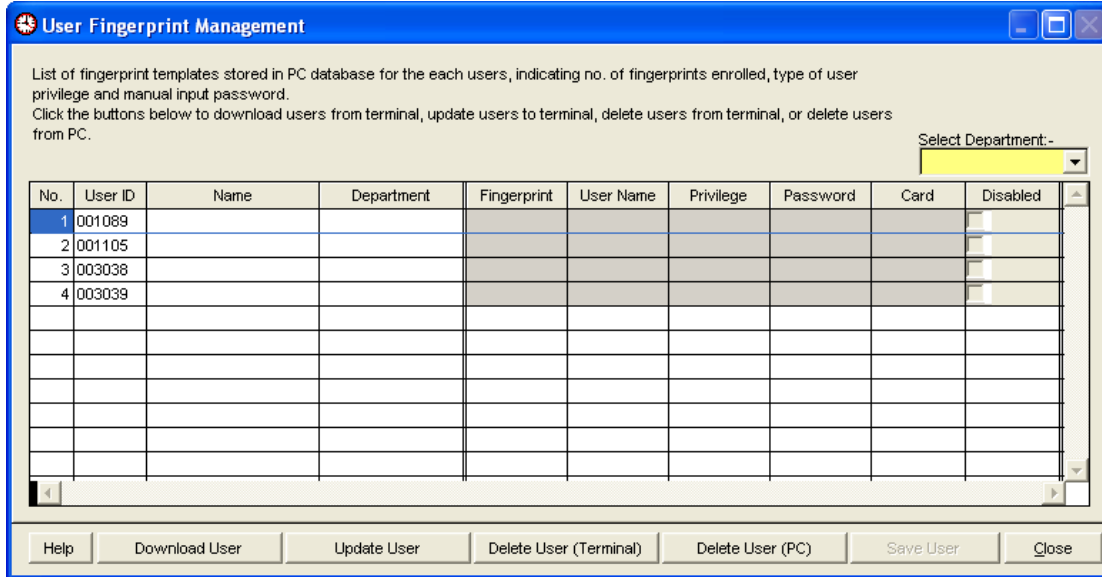
You will see all downloaded transaction logs are listed here.

It shows TCMS v2 has these transaction logs as database, and you can continue to prepare clocking schedules and time attendance reporting.

TECHNICAL TIPS

FRIS 2 DATABASE SERVER WITH MULTIPLE COPIES OF TCMS V2

Step 9



Check into Fingerprint Management.

You will see the user ID of those assigned under the department. Anyway TCMS v2 does not store their fingerprint, password, card ID or username. Therefore you cannot download or upload users among the terminals, to avoid any improper usage of the system.

User enrollment and transfer are under HR or the person in charge of TCMS v2.