

TECHNICAL TIPS

FINGERTEC

FINGERTEC TERMINAL FUNCTIONS UPDATE TOOL

Precaution before installation:

The tool only works with FingerTec® models with firmware version 6.10 and above (including version 6.10).

Please do not use this tool if your FingerTec® terminals with lower firmware version.

To check firmware version of your terminal, press Menu > Sys Info > Dev Info > Firmware version.

Please contact support@fingertec.com to seek for more information and assistance.

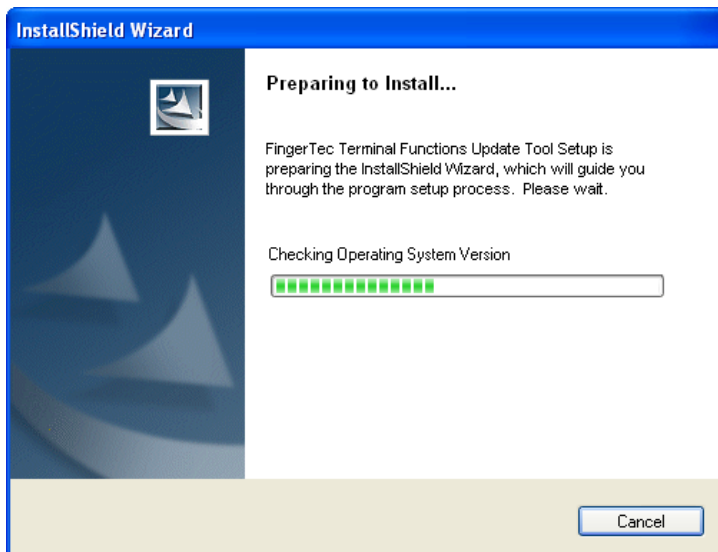
Installation

Step 1



Double click to initial the installation process.

Step 2



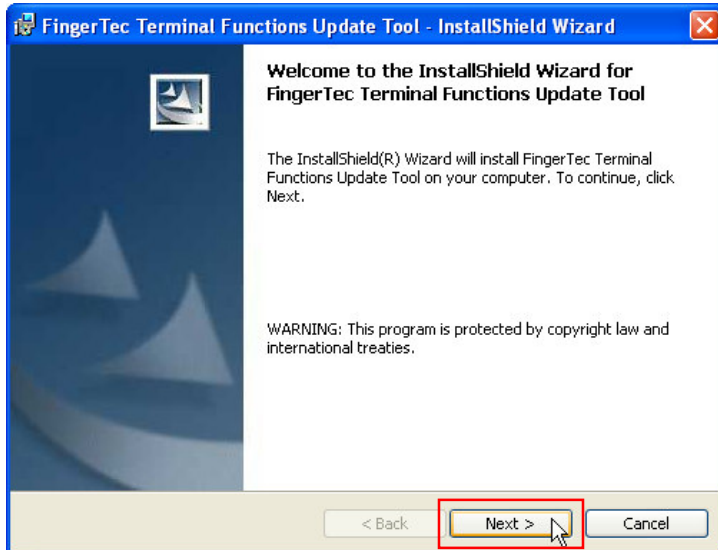
Installation wizard started. Please follow the on screen instruction.

TECHNICAL TIPS

FINGERTEC

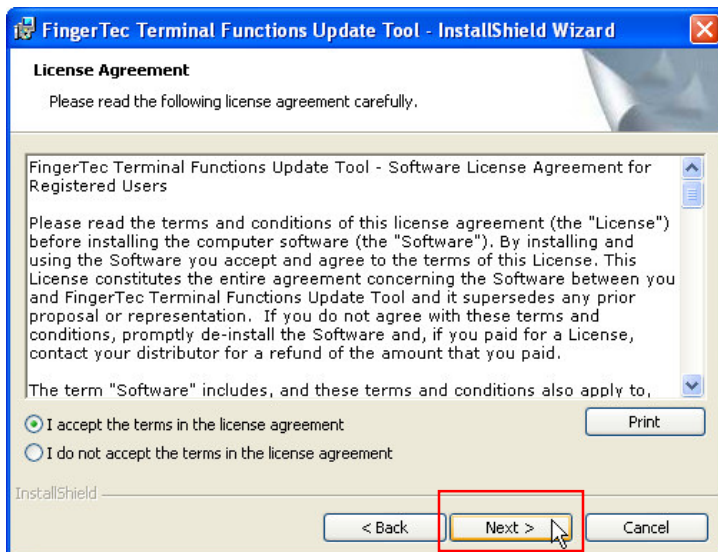
FINGERTEC TERMINAL FUNCTIONS UPDATE TOOL

Step 3



Click Next to proceed.

Step 4



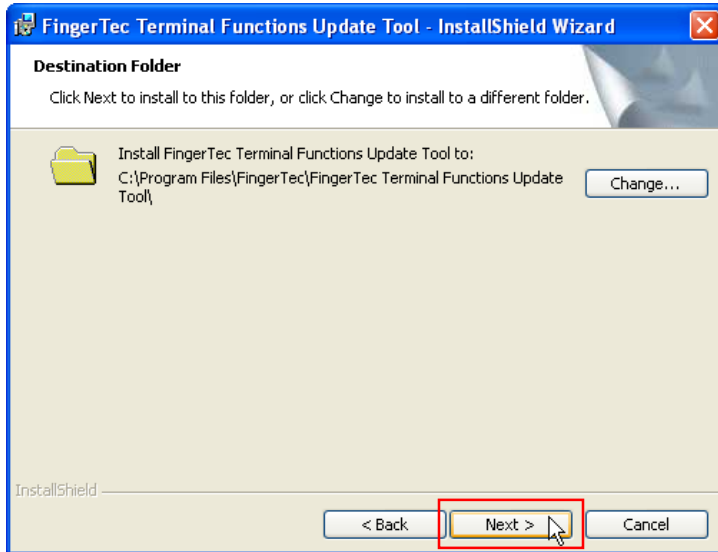
Please read and understand the license agreement before you install the tool.

Click "I accept terms in the license agreement" to activate the Next button.

Click Next to proceed.

FINGERTEC TERMINAL FUNCTIONS UPDATE TOOL

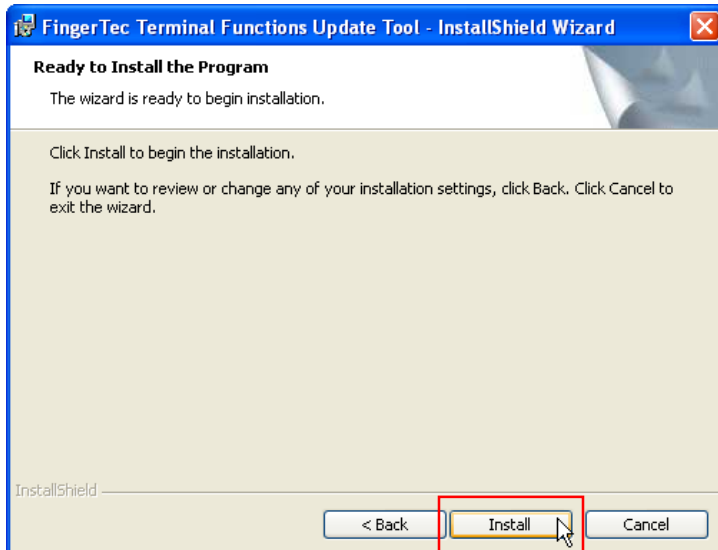
Step 5



By default, the tool is installed to C:\Program Files\FingerTec\FingerTec Terminal Functions Update Tool\.

Click Next to accept the recommended installation path.
Click Change to define your preferred installation path if you would like to do so.

Step 6



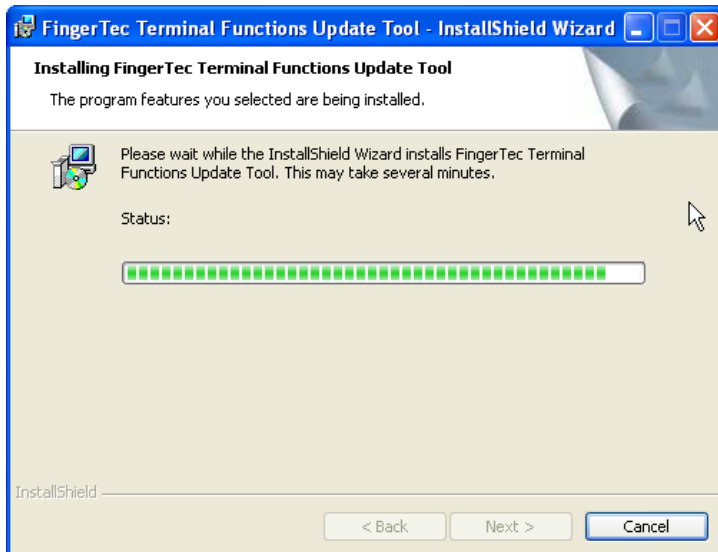
Click Install to start installation process.

TECHNICAL TIPS

FINGERTEC

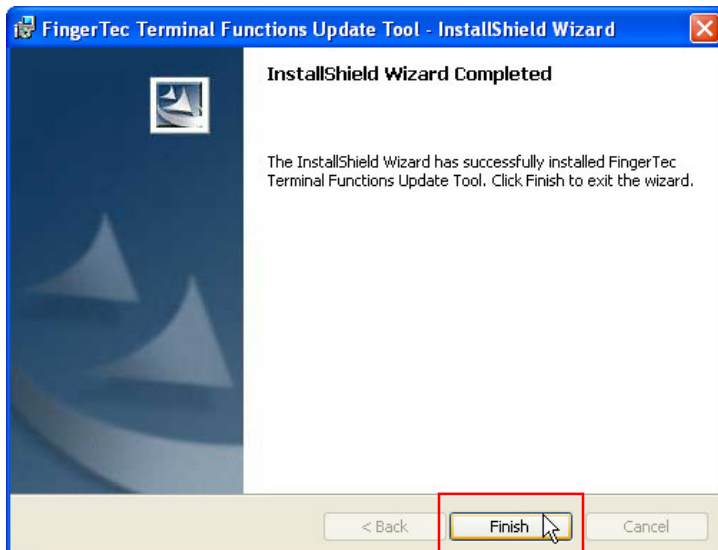
FINGERTEC TERMINAL FUNCTIONS UPDATE TOOL

Step 7



The installation process takes few minutes to complete. Please be patient.

Step 8



Click Finish to acknowledge installation process is completed.

TECHNICAL TIPS

FINGERTEC

FINGERTEC TERMINAL FUNCTIONS UPDATE TOOL

Step 9



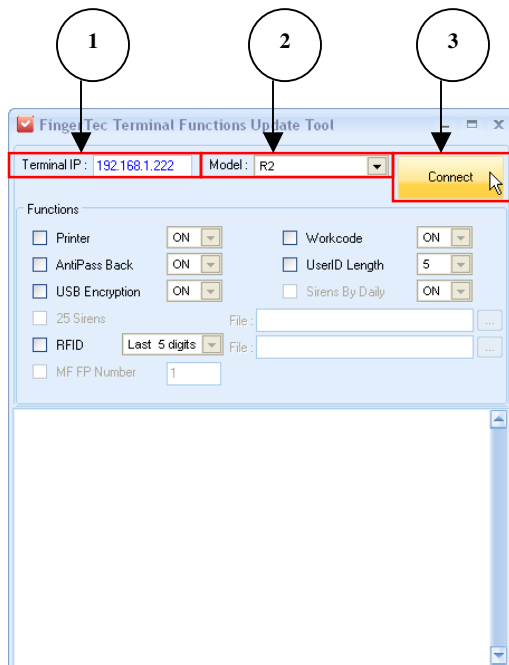
A new desktop short cut is created.

Double click it to start to use the tool.

Operations

Step 1

Connect to the terminal



1 – insert the IP address of your terminal.

2 – select the model of your terminal

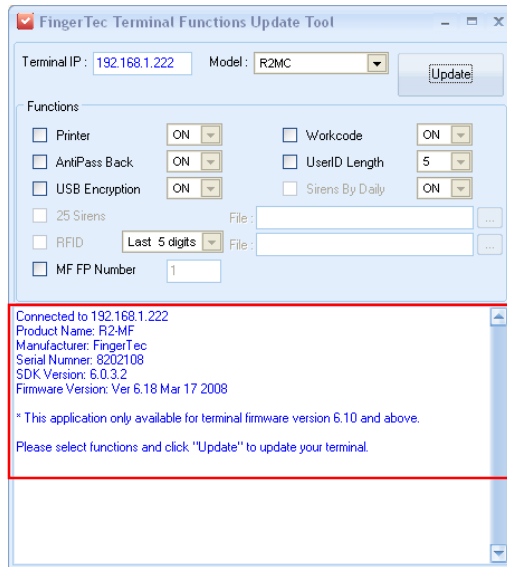
3 – click Connect to connect to the terminal.

TECHNICAL TIPS

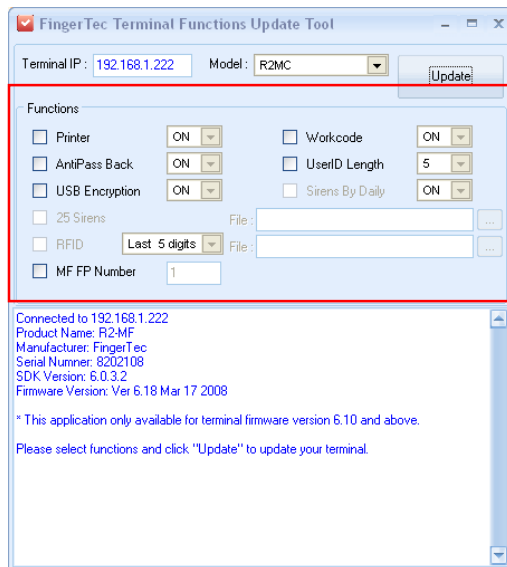
FINGERTEC TERMINAL FUNCTIONS UPDATE TOOL

Step 2

Identify the model and its supporting functions.



Tool reads into terminal and all information published on screen. Please make sure the Product Name is same as your selection. If the model is wrongly selected, the upgrade process will not give any effect to the terminal.



In the functions field, there are total 9 functions, but it varies with the models. You can only choose the activated functions.

TECHNICAL TIPS

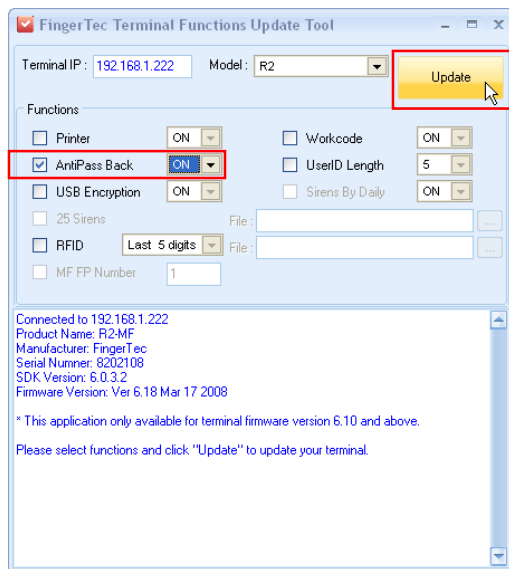
FINGERTEC

FINGERTEC TERMINAL FUNCTIONS UPDATE TOOL

1. Printer – terminal can work with printer to print receipt after verification.
2. Antipassback – terminal blocks user to enter or exit if missed previous verification.
3. USB encryption – data downloaded into USB pen drive is encrypted to avoid any miss use or edit.
4. 25 sirens – terminal with 25 scheduled bells everyday to ring siren.
5. RFID – 3 types of RFID card number to be read by terminal. First 10-digits, last 8-digits or last 5-digits
6. MF FP Number – fingerprint templates to store into a MIFARE card, value from 1 ~ 10 fingerprints.
7. Work Code – User can insert work code after verification.
8. User ID length – to extend user ID to 6, 7, 8 or 9 digits.
9. Siren by daily – terminal with 20 scheduled bells daily to ring siren. The schedules rotate 7 days a week.

Step 3

Select function to upgrade



Click the column next to the activated function, example Antipassback.

In the column ON/OFF, choose ON to enable the function; or OFF to disable the function.

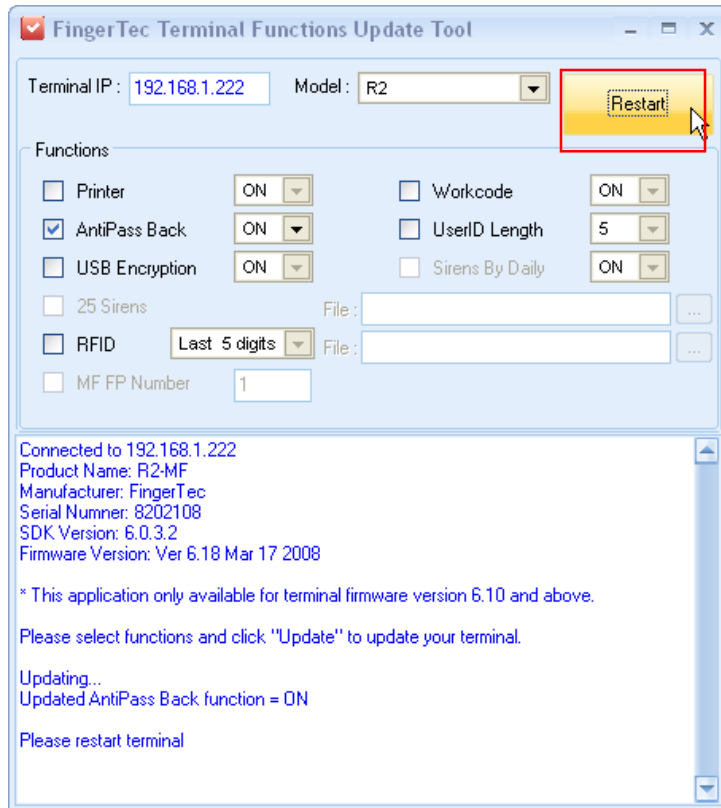
Click Update to update changes to the terminal.

TECHNICAL TIPS

FINGERTEC

FINGERTEC TERMINAL FUNCTIONS UPDATE TOOL

Step 4
Finish



The upgrade process is fast. You can see the result at the status menu.

The tool requests you to restart the terminal after finish upgrading.

Click Restart to restart the terminal to take effect.

Special upgrade

There are 2 special functions that require special firmware file during upgrade process, which are 25 sirens and RFID.

The firmware files are installed to the same folder of FingerTec Terminal Functions Update Tool. Without these files, the upgrade process cannot be done.

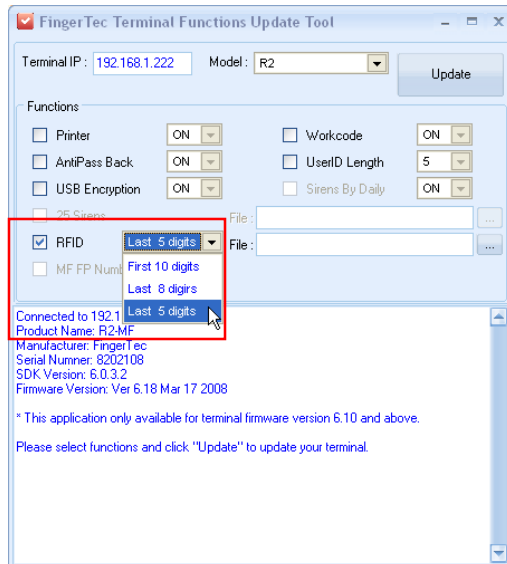
The default folder is C:\Program Files\FingerTec\FingerTec Terminal Functions Update Tool\.

TECHNICAL TIPS

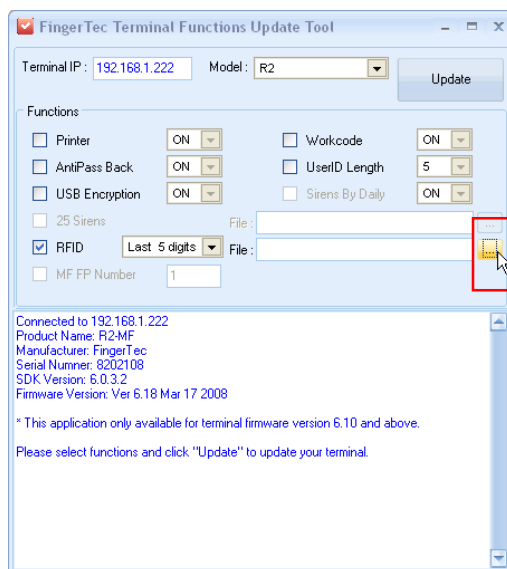
FINGERTEC

FINGERTEC TERMINAL FUNCTIONS UPDATE TOOL

For RFID



Please select the RFID card number.

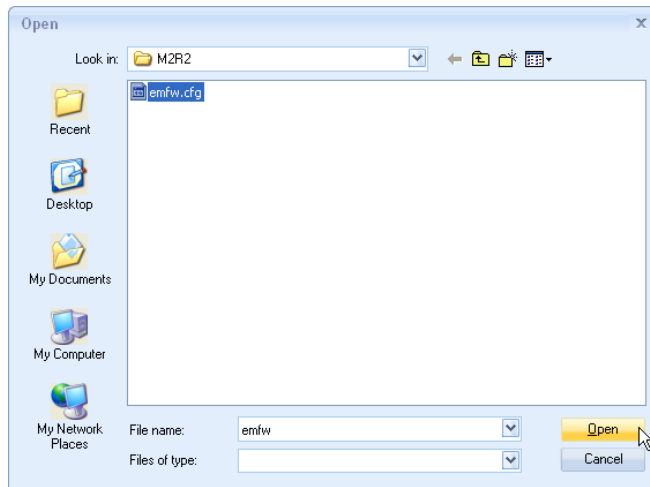


Click to seek for the firmware file.

TECHNICAL TIPS

FINGERTEC

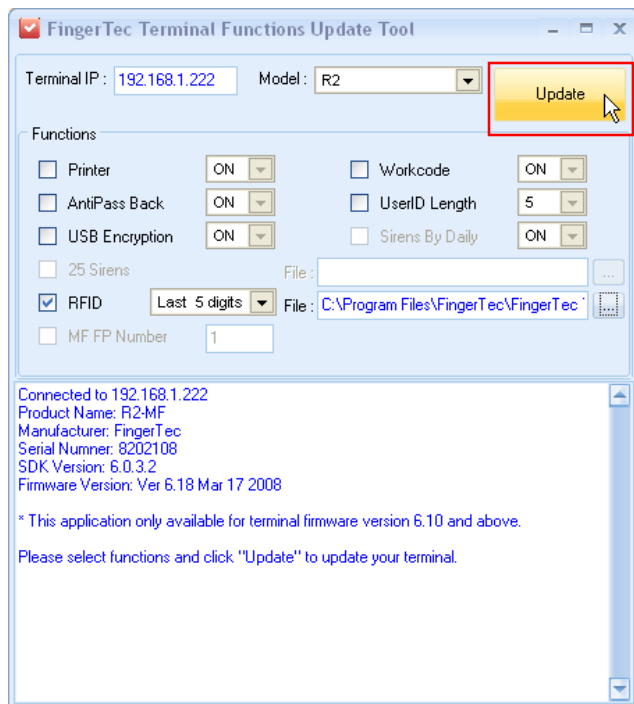
FINGERTEC TERMINAL FUNCTIONS UPDATE TOOL



Tool always seek into the same folder of FingerTec Terminal Functions Update Tool.

This is an automatic process. You will only need to seek manually into computer if tool cannot seek the file.

Select the file and click Open.



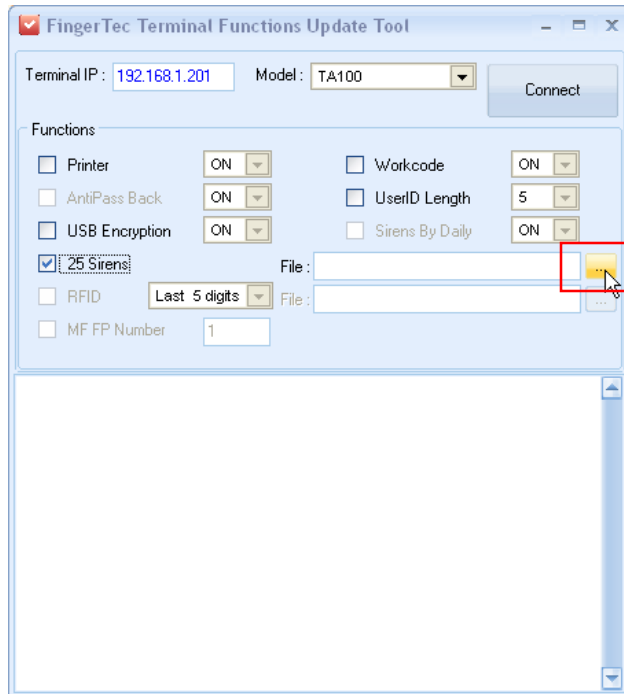
You can now continue to upgrade as taught before.

TECHNICAL TIPS

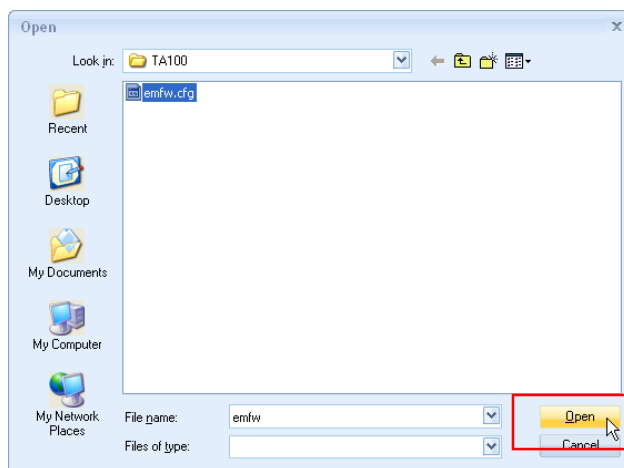
FINGERTEC

FINGERTEC TERMINAL FUNCTIONS UPDATE TOOL

For 25 Siren



You will need to do the same process as you upgrade RFID.



The firmware file is into another location, but the same folder.

Click Open to use the file.

You can now continue to upgrade as taught before.

TECHNICAL TIPS



FINGERTEC TERMINAL FUNCTIONS UPDATE TOOL

Usage of each Functions

Functions	Usage
Printer	Terminal can connect to thermal printer.Printer prints receipt after each verification.
Antipassback	2 terminals installed to guard an entrance. User must verify when accessing entrance. Terminal blocks users if user miss previous verification
USB encryption	Terminal encrypted attendance data during downloading attendance into USB pen drive.
25 sirens	Terminal offers 25 sirens per day in a week. Total 175 sirens per week.
RFID Last 5 digits	Terminal will read the last 5 digits of RFID card as Card ID.
RFID Last 8 digits	Terminal will read the last 8 digits of RFID card as Card ID.
RFID First 10 digits	Terminal will read the first 10 digits of RFID card as Card ID.
MF FP number	Maximum of fingerprint to write into MIFARE cards.
WorkCode	To enable terminal to request work code from users.
User ID Length	To extend the users ID from 5 digits to 9 digits.
Siren by daily	Terminals offer 20 sirens every day.

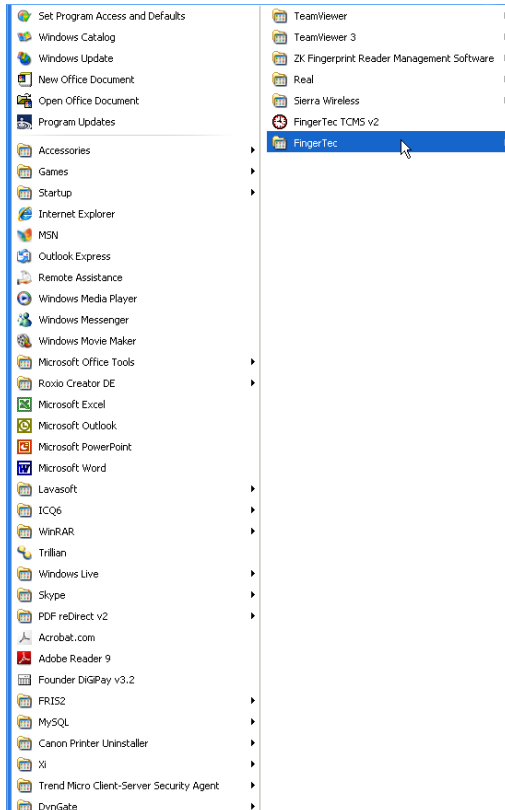
TECHNICAL TIPS

FINGERTEC

FINGERTEC TERMINAL FUNCTIONS UPDATE TOOL

Uninstallation

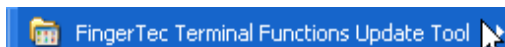
Step 1



Click Start-up button to show all installed software and tools.

Select FingerTec

Step 2



Select FingerTec Terminal Functions Update Tool.

Step 3



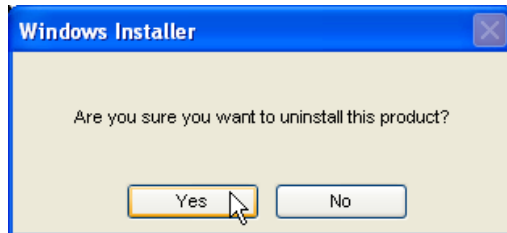
Select Uninstall FingerTec Terminal Functions Update Tool to start to remove the tool.

TECHNICAL TIPS

FINGERTEC

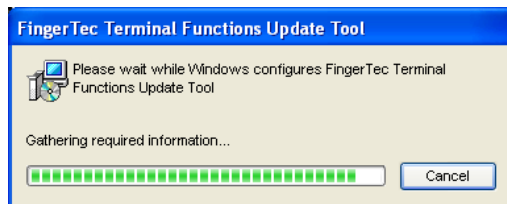
FINGERTEC TERMINAL FUNCTIONS UPDATE TOOL

Step 4



Click Yes to proceed.

Step 5



Wait the process to complete.